



## **MULTIPURPOSE DOORS**

CLEAN ROOM, LEAD LINE, ACOUSTIC,  
SHAFT, AND AUTO SWING DOORS



# Hörmann Brand Quality

## Safety and Reliability

We are Hörmann, a pioneer in high-performance doors across the world and No. 1 door brand in Europe. Established in 1935, we adopt cutting-edge German technology to design, build, and supply doors for Industrial, Commercial, and Residential applications.

We started our journey in India as Shakti Met-Dor (Now Shakti Hörmann) in 1994 and have been operating as a Hörmann subsidiary since 2012. We have developed a reputation for excellence in the Indian market with high-quality products, prompt delivery, and a service paradigm that has become an industry benchmark.

We have a pan-India presence with sales and marketing offices spread across all major metros, and our manufacturing facility near Hyderabad is equipped to produce over 200,000 hollow metal doors & frames and over 10,000 Industrial doors per annum. All our doors come with varied options in ironmongery, sizes, and finishes; incorporating the latest global standards in Safety and Security.

Our vision is to introduce products and services that enrich customer experiences across sectors, built on the foundations of innovation, quality, and customer fulfilment.



**40 Countries**  
Worldwide

---



**6000+**  
Strong Workforce

---



**20 Million+**  
Doors Delivered

---



**100+**  
Sales Subsidiaries

---



**38 Factories**  
across Europe, Asia,  
and North America

---



Manufacturing Facility in  
Hyderabad

---



Our presence in the global economy's key regions makes us a strong, future-oriented partner for industrial and public construction projects.



### **In-house Product Development**

Growing and constantly changing functional and safety requirements necessitate continuous new construction/equipment developments and improvements, especially when it comes to moveable construction components such as doors. In this area, our qualified development teams time and again prove their specialised expertise.



### **Highly Sophisticated Production Methods**

We at Hörmann rely on the latest production technology at our specialised factories. Computer-controlled operations ensure dimensionally accurate elements with perfectly fitted fittings and functional parts.



### **Fire Testing at Accredited Labs**

Our new and further developments are constantly tested for fire resistance through fire tests at CBRI - India, Warrington - UK, and Underwriters Laboratories (UL) - Chicago. We continually test and certify with glazing and fire-rated steel frame profiles as per IS3614 Part 2 & BS476 Part 22 Standards. The knowledge gained from these ensures high fire protection for life and property.



### **Expert Building Support**

Experienced specialists within our customer-oriented sales organisation accompany you from the planning stage through technical clarification and door hardware scheduling to ensure proper selection and application. Expert fitting is guaranteed by experienced Hörmann fitters and engineers.



# Multipurpose Doors

## Steel Flush Doorset - Specification as per IS 16074

### Material

Galvanised Steel  
Stainless Steel

### Sheet Thickness

Frame - 1.2 mm  
Shutter - 0.8 mm

### Optional Sheet Thickness

Frame - 1.6 / 2.0 mm  
Shutter - 1.2 / 1.6 mm

### Frame Size

Standard - 125 x 55 mm  
Optional - Architrave

**Shutter Thickness** - 46 mm

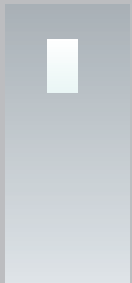
### Infill



Honeycomb



Mineral Wool



R



LB

### Vision Panel

200 x 300 mm  
150 x 750 mm  
450 x 750 mm

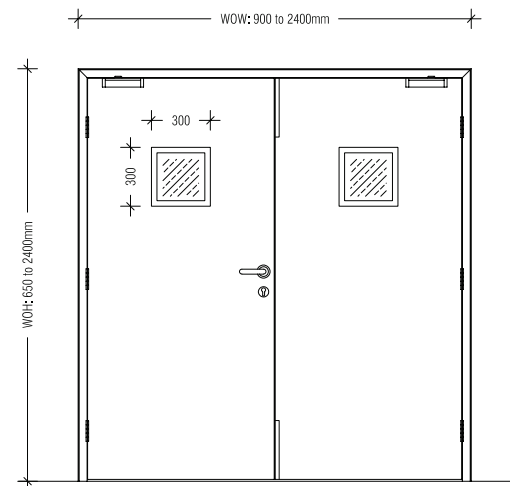
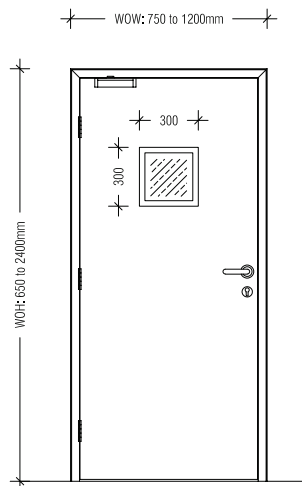
### Louvre

450 x 300 mm  
450 x 200 mm

### Applications

- Commercial Buildings
- Institutions
- Public Buildings
- Airports/Metro
- Hospitals

Note: All Dimensions are in mm



\*max door height is upto 3000mm

WOW = Wall Opening Width  
WOH = Wall Opening Height



# Clean Room Doors

## Material

- Galvanised Steel
- Stainless Steel

## Sheet Thickness

- Frame - 1.2 mm
- Shutter - 0.8 mm

## Optional Sheet Thickness

- Frame - 1.6 / 2.0 mm
- Shutter - 1.2 / 1.6 mm

## Frame Size

- Standard - 125 x 55 mm
- Optional - Architrave

Shutter Thickness - 46 mm

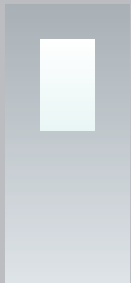
## Infill



Honeycomb



Mineral Wool



G

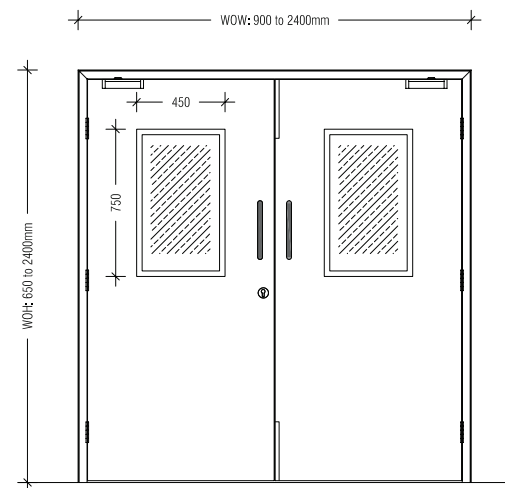
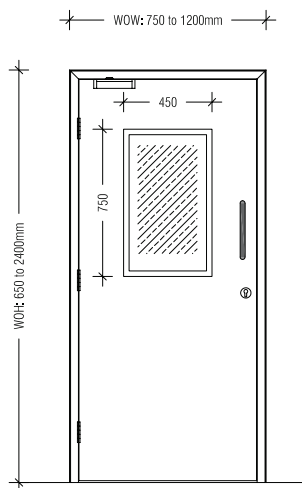
## Vision Panel

450 x 750 mm

## Applications

- Pharma Units
- Food Processing
- Testing Centres and Labs

Note: All Dimensions are in mm



\*max door height is upto 3000mm

WOW = Wall Opening Width  
WOH = Wall Opening Height



## Material

Galvanised Steel  
Stainless Steel

## Sheet Thickness

Frame - 1.2 mm  
Shutter - 0.8 mm

## Optional Sheet Thickness

Frame - 1.6 / 2.0 mm  
Shutter - 1.2 / 1.6 mm

## Frame Size

Standard - 125 x 55 mm  
Optional - Architrave

**Shutter Thickness** - 46 mm

## Infill



Honeycomb



Mineral Wool



V

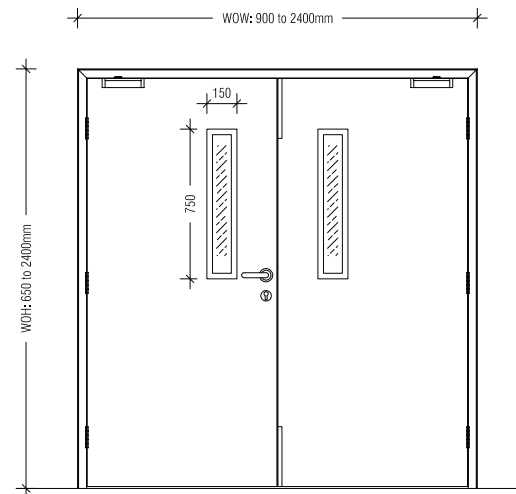
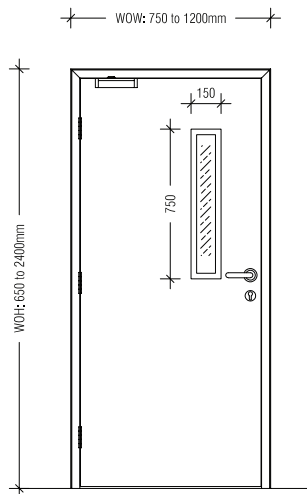
## Vision Panel

300 x 300 mm  
150 x 750 mm  
450 x 750 mm

## Applications

- Hospitals
- Corridors
- Ward Rooms
- Consultancy
- Patient Rooms
- Utilities

Note: All Dimensions are in mm



\*max door height is upto 3000mm

WOW = Wall Opening Width  
WOH = Wall Opening Height

# Lead Line Doors

## Material

Galvanised Steel  
Stainless Steel

## Sheet Thickness

Frame - 1.6 mm  
Shutter - 1.2 mm

## Frame Size

Standard - 125 x 55 mm

## Lead Line

Frame - 1.6 mm  
Shutter - 1.6 mm

**Shutter Thickness** - 48 mm

## Infill



Honeycomb



R

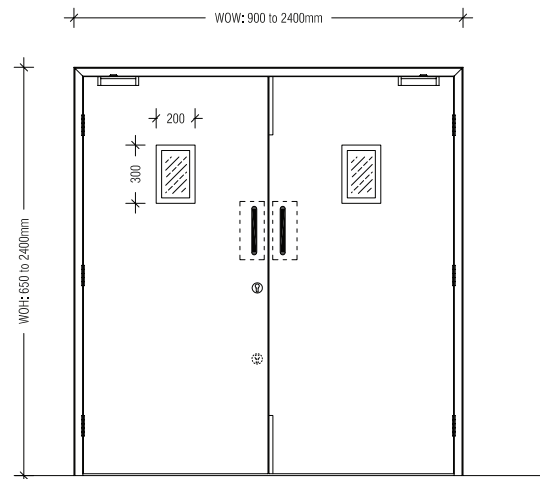
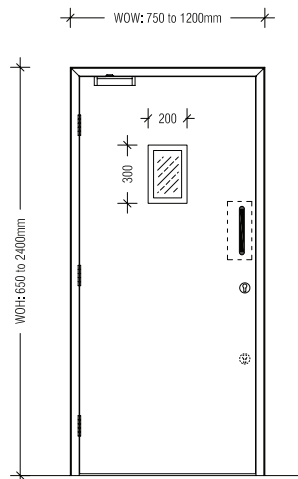
## Vision Panel (Optional)

200 x 300 mm

## Applications

- X-Rays Rooms
- CT Scan
- MRI

Note: All Dimensions are in mm



WOW = Wall Opening Width  
WOH = Wall Opening Height



# Acoustic Doors

## Material

Galvanised Steel  
Stainless Steel

## Sheet Thickness

Frame - 1.6 mm  
Shutter - 1.2 mm

## Frame Size

Standard - 125 x 55 mm  
Optional - Architrave

Shutter Thickness - 48 mm

## Infill



Mineral Wool



- Single Door 1200 X 2400 - 35 dB - Infill HC
- Single Door 1200 X 2400 - 40 dB - Infill MW
- Double Door 2400 X 2400 - 35 dB - Infill HC
- Double Door 2400 X 2400 - 39 dB - Infill MW

\*All doors with sill and groove frame

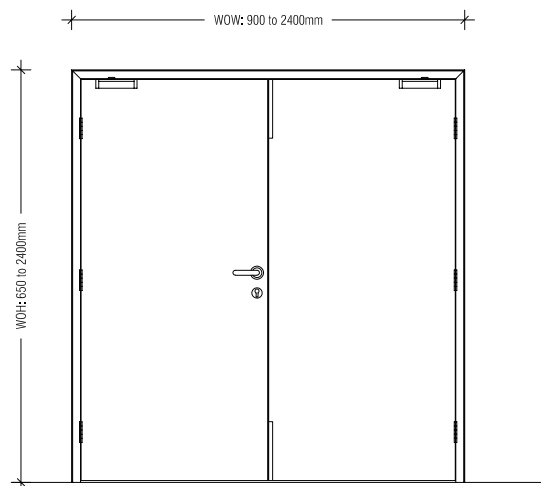
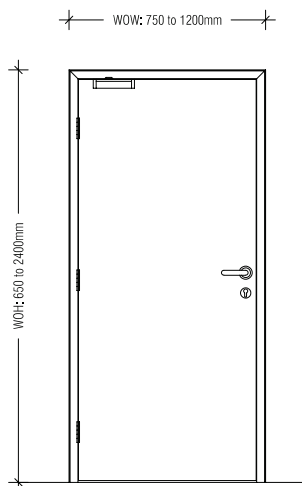
## Vision Panel

200 x 300 mm  
150 x 750 mm  
450 x 750 mm

## Applications

- Commercial Buildings
- Institutions
- Public Buildings
- Airports/Metro
- Hospitals

Note: All Dimensions are in mm



\*max door height is upto 3000mm

WOW = Wall Opening Width  
WOH = Wall Opening Height



## Material

Galvanised Steel  
Stainless Steel

## Sheet Thickness

Frame - 1.2 mm  
Shutter - 0.8 mm

## Optional Sheet Thickness

Frame - 1.6 / 2.0 mm  
Shutter - 1.2 / 1.6 mm

## Frame Size

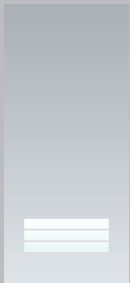
Standard - 125 x 55 mm  
Optional - Architrave

**Shutter Thickness** - 46 mm

## Infill



Honeycomb



LB

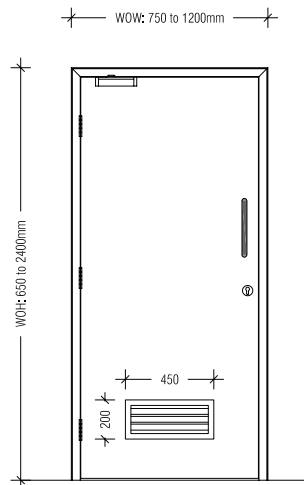
## Louvre

450 x 300 mm  
300 x 450 mm

## Applications

- Toilet Main Entrance
- Toilet for People with Special Needs

Note: All Dimensions are in mm



WOW = Wall Opening Width  
WOH = Wall Opening Height

## Material

Galvanised Steel  
Stainless Steel

## Sheet Thickness

Frame - 1.2 mm  
Shutter - 0.8 mm

## Optional Sheet Thickness

Frame - 1.6 / 2.0 mm  
Shutter - 1.2 / 1.6 mm

## Frame Size

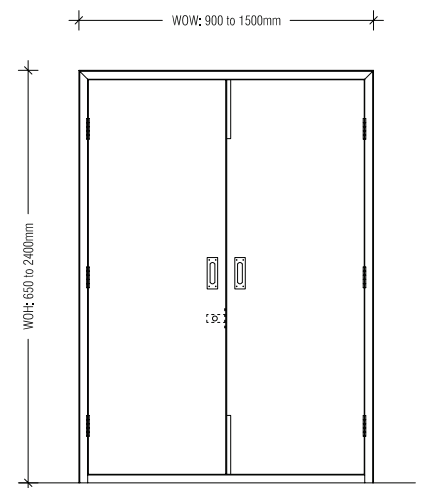
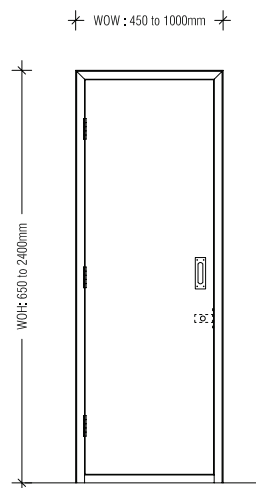
Standard - 125 x 55 mm  
Optional - Architrave

**Shutter Thickness** - 46 mm

## Infill



Honeycomb



\*shaft door shown from FFL

## Applications

- Electrical Shaft
- LV Shaft
- Plumbing Shaft
- FHC

Available with Fire Rating

Note: All Dimensions are in mm

WOW = Wall Opening Width  
WOH = Wall Opening Height



# Tubular Glazed Door and Partition Wall System

## Material

Galvanised Steel  
Stainless Steel

## Sheet Thickness

Frame - 1.6 mm  
Shutter - 1.2 mm

## Frame Size

Standard - 125 x 60 mm

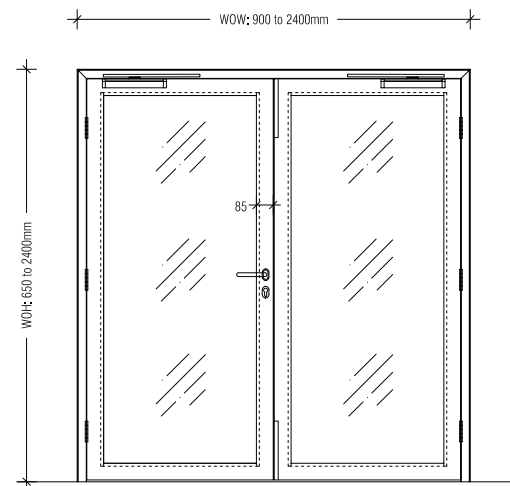
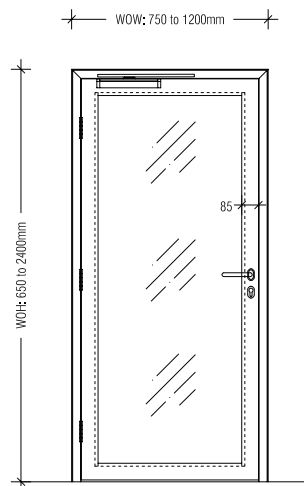
Shutter Thickness - 60 mm

## Infill

Toughened Glass

## Glass Thickness

8 mm  
10 mm  
12 mm



\*max door height is upto 3000mm

## Applications

- Commercial Buildings
- Institutions
- Public Buildings
- Airports/Metro
- Hospitals

Note: All Dimensions are in mm

WOW = Wall Opening Width  
WOH = Wall Opening Height



### Material

Galvanised Steel  
Stainless Steel

### Sheet Thickness

Frame - 1.2 mm  
Shutter - 0.8 mm

### Optional Sheet Thickness

Frame - 1.6 / 2.0 mm  
Shutter - 1.2 / 1.6 mm

### Frame Size

Standard - 125 x 60 mm

Shutter Thickness - 46 mm

### Infill



Honeycomb



Mineral Wool

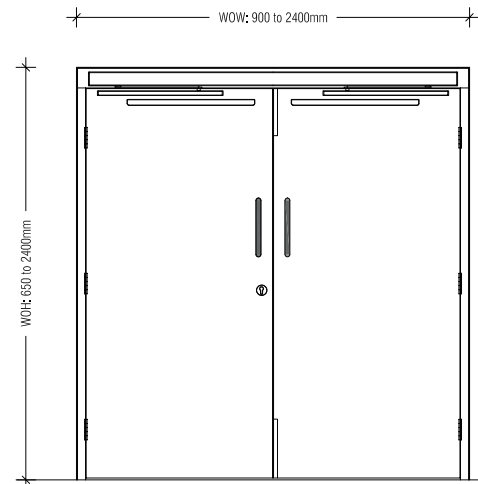
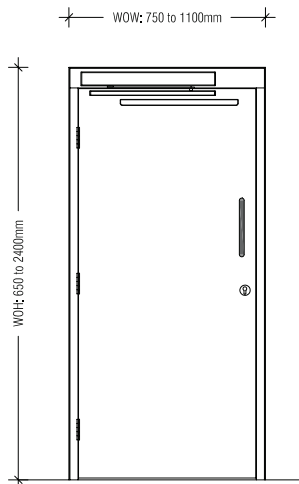


### Vision Panel

200 x 300 mm  
150 x 750 mm  
450 x 750 mm

### Louvre

450 x 300 mm  
300 x 450 mm



\*max door height is upto 3000mm

### Applications

- Commercial Buildings
- Institutions
- Public Buildings
- Airports/Metro
- Hospitals

### Features

Low Energy Operator with Safety Sensors  
Available with Slide Arm and Scissor Arm  
Integrated Door Co-ordinator for Double Leaf  
Suitable for Fire Rated Applications

Note: All Dimensions are in mm

WOW = Wall Opening Width  
WOH = Wall Opening Height

## RAL Colours



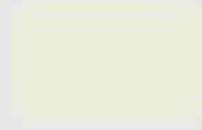
RAL 9010  
PURE WHITE - (STD)



RAL 9016  
TRAFFIC WHITE - (STD)



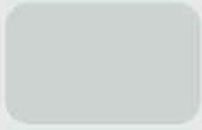
RAL 9001  
CREAM - (STD)



RAL 9002  
GREY WHITE - (STD)



RAL 1013  
OYSTER WHITE - (STD)



RAL 7035  
LIGHT GREY - (STD)



RAL 7040  
WINDOW GREY - (STD)



RAL 5023  
DISTANT BLUE - (STD)



RAL 5015  
SKY BLUE - (STD)

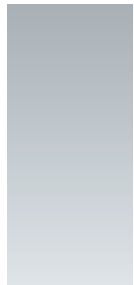


RAL 3020  
TRAFFIC RED - (STD)

\*The colours and surface finishes shown are indicative and subject to change.



## Door Elevation



**F**



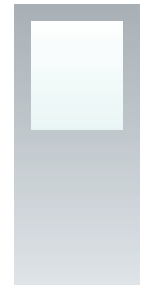
**V**



**R**



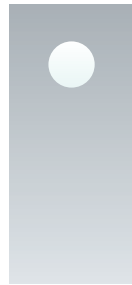
**N**



**G**



**N1**



**C**



**FG**



**LB**



**LT**



**LD**



**FL**



**GLB**



**VLB**



**NLB**

There is no limitation to the size of Vision Lite for General Application Doors

Max. Glass Width = Net Door Width - 300 mm

Max. Glass Height = Net Door Height - 400 mm

Alternatively, for larger transparency you can look into our product line - Rail & Door.

### Variants

Mitre Joint  
Butt Joint  
Welded

### Options

Architrave on one side  
Architrave on both sides

### Sheet Thickness (Profile Depth)

Up to to 150 mm - 1.2 mm  
151 & above - 1.6 mm

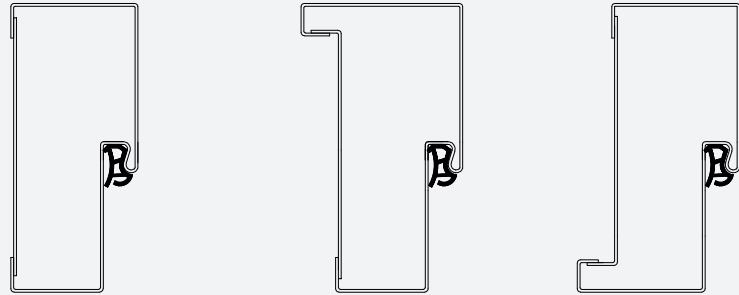
### Frame Depth

Max : 350 mm  
Min : 50 mm

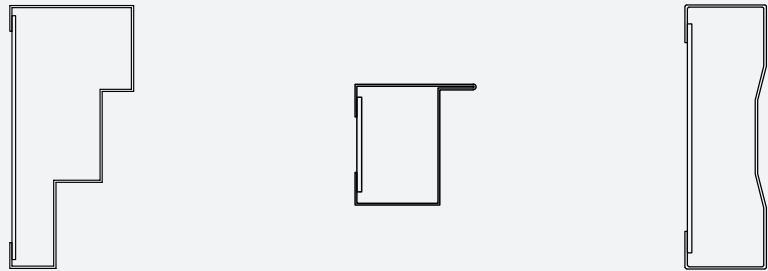
### Smoke Seal

PVC Seal for Non-Fire Rated  
EPDM Gasket for Fire Rated

### Single Rebate



### Special Profiles

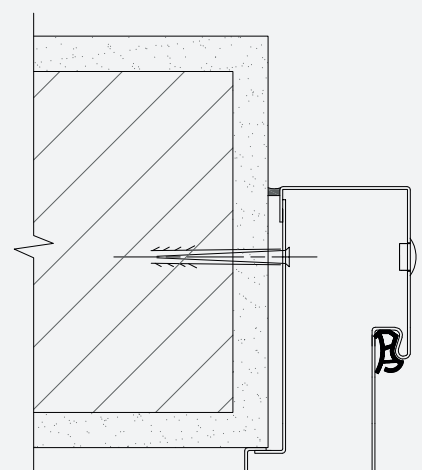
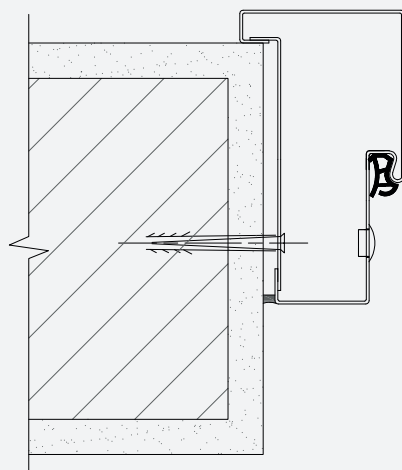
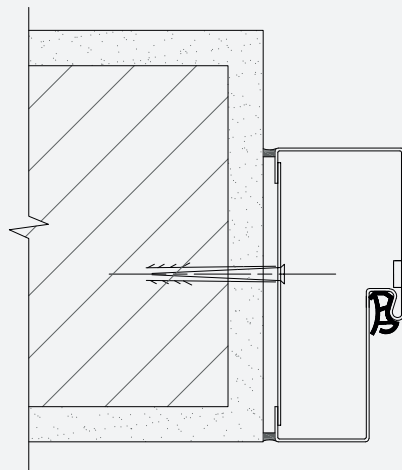


Double Egress

Zero Soffit

Double Swing

### Frame Fixing Details



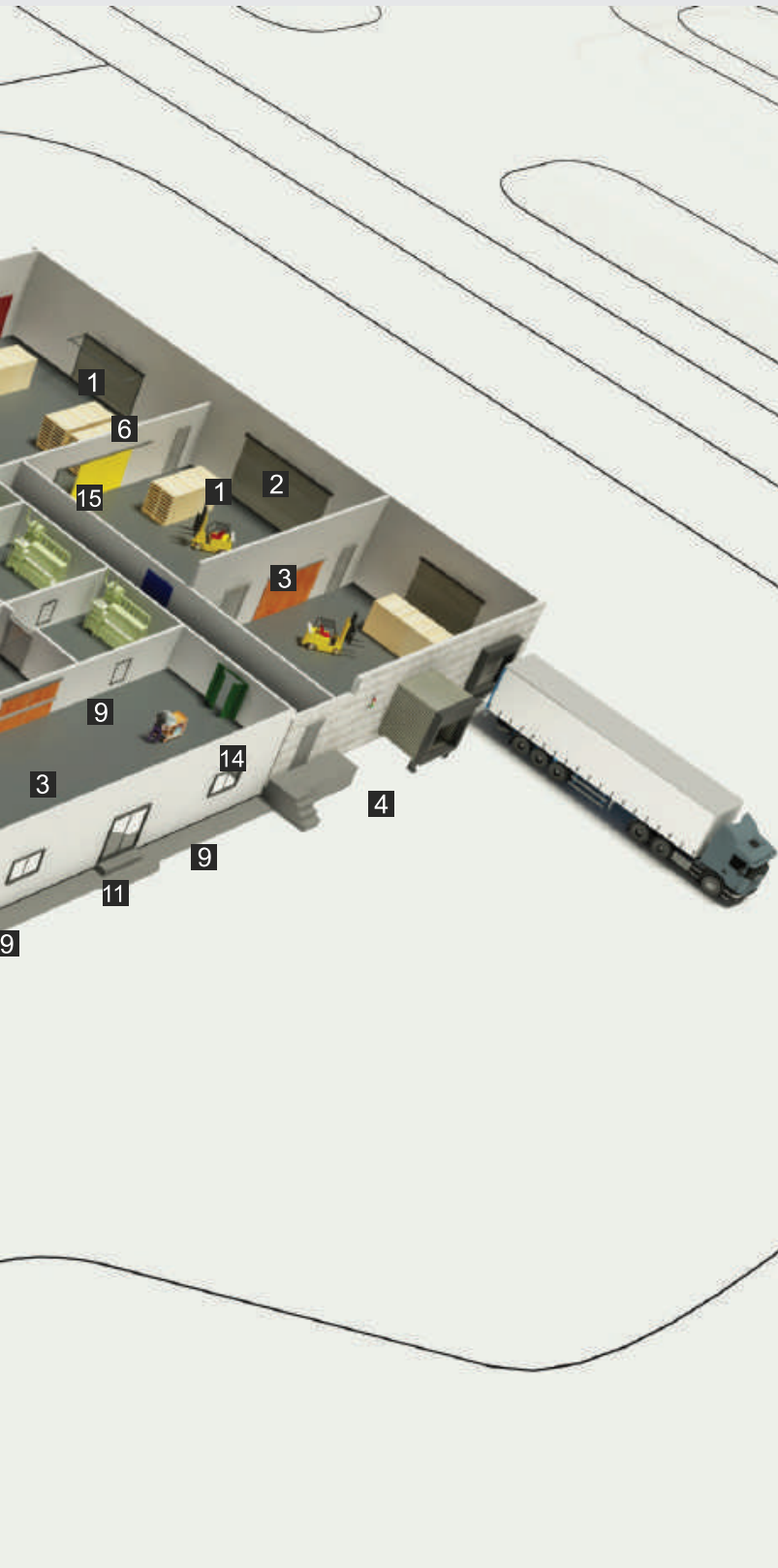


# Hörmann Product Range

Everything from a Single Source for Your Construction Project







1 Sectional Door



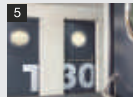
2 Rolling Shutter & Rolling Grill



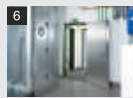
3 Loading Technology



4 Steel & Stainless Steel Sliding Door



5 Steel & Aluminium Multi-function Door



6 Stainless Steel Door



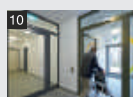
7 Steel Clean Room Door



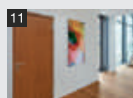
8 Double Glazed Window



9 Emergency Exit Door



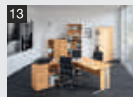
10 Fully Glazed Fire Door



11 GRAINTEK™ Door



12 Collective Garage Door



13 Automatic Swing Door



14 Automatic Glazed Sliding Door



Indian Green Building Council  
Greening India since 2001



## Eco-Conscious

At Hörmann, we believe in playing our role in contributing towards a sustainable tomorrow. We support energy conservation, green revelation and eco-friendly products. More than 60% of the power requirement at our production facility is fulfilled by our own solar power unit. Our factory and products are certified by Indian Green Building Council and are Platinum rated.

---

## Corporate Social Responsibility

Every time we achieve a little, we build a doorway to help others. The guiding principle is to improve the quality of the society and the environment that sustains us, and create a sustainable well-being.

As a socially responsible company, we have set aside 2% of our net profit every year to build a better community, help the unprivileged and contribute for the greater good of the planet.





# Pan-India Presence

Powered by a Strong Network for Sales, Distribution and Service





Hörmann KG Amshausen, Germany



Hörmann KG Antriebstechnik, Germany



Hörmann KG Brandis, Germany



Hörmann KG Brockhagen, Germany



Hörmann KG Dissen, Germany



Hörmann KG Eckelhausen, Germany



Hörmann KG Freisen, Germany



Hörmann KG Ichtershausen, Germany



Hörmann KG Werne, Germany



Hörmann Alkmaar B.V., Netherlands



Hörmann Legnica Sp. z o.o., Poland



Hörmann Beijing, China



Hörmann Tianjin, China



Hörmann LLC, Montgomery IL, USA



Hörmann Flexon LLC, Burgettstown PA, USA



Shakti Hörmann, India



Garage Doors  
Operators  
Industrial Doors  
Loading Equipment  
Hinged Doors  
Door Frames



## Shakti Hörmann Pvt. Ltd.

H.No. 2-67/1 (Survey No.188,198) Gagillapur,  
Dundigal Municipality,  
Dundigal Gandimaisamma Mandal,  
Medchal (Malkajiri) District – 500 043, TS, India.

Email: [sales@shaktihormann.com](mailto:sales@shaktihormann.com)  
[www.shaktihormann.com](http://www.shaktihormann.com)

**TOLL FREE: 1800 313 6619**

**HÖRMANN**  
An ISO 9001:2015 certified company